

West Nose Creek Water Quality Data Report



> A beautiful Southwest facing view of West Nose Creeks beaver dam

CreekWatch is a program of the non-profit RiverWatch Institute of Alberta, specializing in community-based environmental monitoring and award-winning citizen science education for twenty-nine years. This 2023 Report shares our findings with the public, governments, and water quality professionals to collaboratively work towards the base-line monitoring and improvement of our stormwater creeks in Alberta.

This annual CreekWatch Report examines the state of Calgary’s West Nose Creek based on the water quality data collected with the assistance of community-based environmental monitoring groups and water quality technicians. You can view a snapshot of data in the attached graphs generated by the RiverWatch online and responsive [graphing tool](#). Thank you to The City of Calgary, the Land Stewardship Centre’s Watershed Stewardship Grant for their funding support, and to all of our dedicated volunteers who have made this sampling season possible – we couldn’t have done it without you!

West Nose Creek By-the-Numbers

	2023	2022	2021
Number of Sampling Events	8	2	36
Number of Data Points	56	17	270
Number of Sampling Hours	2	1.3	30

Analysis

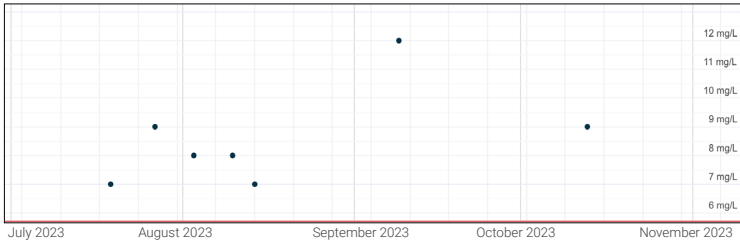
This year’s report shows a similar number of sampling events, sampling hours and data points generated by our technicians and volunteers. Based on median values, improvements were observed in dissolved oxygen, phosphorus and water temperature readings.

West Nose Creek Water Quality Data

Parameter	Median Value		
	2023	2022	2021
Dissolved Oxygen (mg/L)	8.0	6.4	9.0
Water Temperature (°C)	15.4	16.1	12.0
Turbidity (NTU)	18	33	17
pH	8.1	8.2	8.3
Ammonia Nitrogen (mg/L)	0.25	0.25	0.10
Phosphorus (mg/L)	0.31	0.01	0.02
Chloride (mg/L)	125	98	80

NOTE: All data collected during the open water season of the specified calendar year.

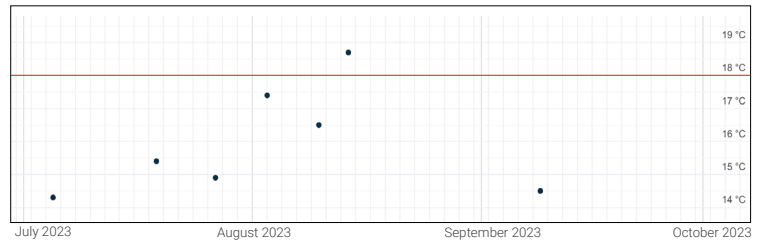
Dissolved Oxygen (mg/L)



Median 8

Dissolved oxygen concentrations are measured using either a YSI probe or a Hach kit with a drop-by-drop titration to show a change in water colour until totally clear. Red line indicates the Environmental Quality Guidelines for Alberta Surface Waters (2018) for exceedance is minimum 5 mg/L for instantaneous (short-term) values.

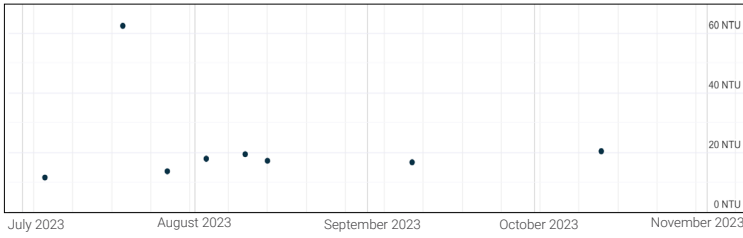
Water Temperature (°C)



Median 15.4

Water temperatures are measured using a Exotech thermometer or YSI probe placed in flowing, shallow water near shore. Red line indicates the Water Quality Objective identified as an ideal value according to the Bow Basin Watershed Management Plan. Values should not exceed a maximum 7-day mean of 18°. Higher values may cause stress on aquatic life.

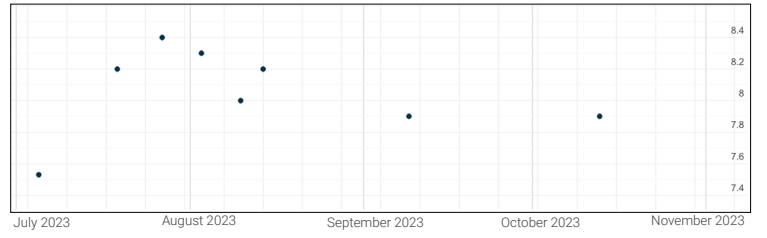
Turbidity (NTU)



Median 18

Turbidity is measured by slowly pouring water into a type of graduated cylinder marked with "Nephelometric Turbidity Units" or NTU's.

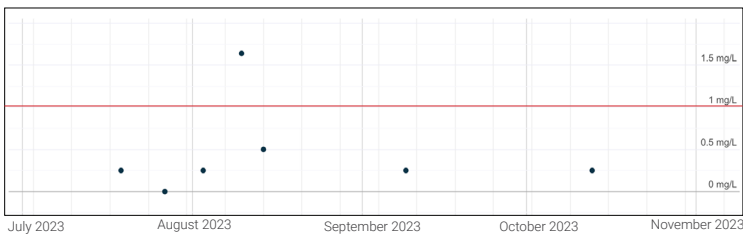
pH



Median 8.1

Creek pH is measured using either a YSI probe or a Hach kit that compare a change in water colour. The Environmental Quality Guidelines for Alberta Surface Waters (2018) for exceedance is a pH value outside the range of 6.5 - 9.

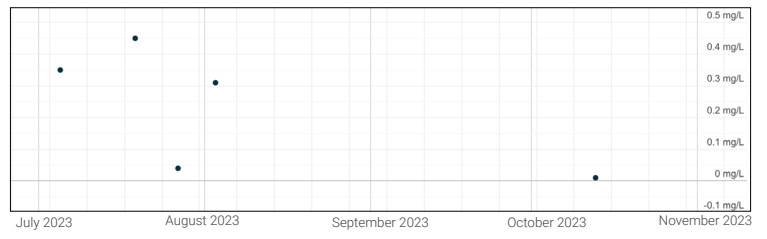
Ammonia Nitrogen (mg/L)



Median 0.25

Ammonia nitrogen concentrations are measured by dipping Hach test strips into water and noting the colour change. Red line indicates the Environmental Quality Guidelines for Alberta Surface Waters (2018) for exceedance is maximum 1.0 mg/L at pH 8.0, 10°C.

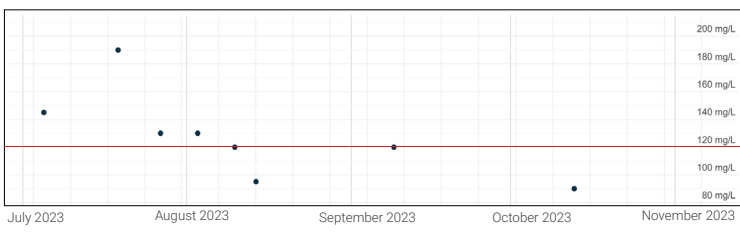
Phosphorus (mg/L)



Median 0.31

Orthophosphate concentrations are measured with either a LaMotte colorimeter or a Hach kit that compare a change in water colour.

Chloride (mg/L)



Median 125

Chloride concentrations are measured using Hach kits with a drop-by-drop titration to show a change in water colour from yellow to orange. Red line indicates the Environmental Quality Guidelines for Alberta Surface Waters (2018) for exceedance is maximum 120 mg/L.

To review our data reports, visit creekwatch.ca/creekwatch-reports